

FOR IMMEDIATE RELEASE: 20 FEBRUARY
2020

TONY FOMISION

E ngaro ana i te Pōuri | Lost in the Dark

Te Papa's Tony Fomison exhibition of misfits, monsters and medical deformities comes to Whangārei Art Museum

Tony Fomison: Lost in the Dark opens at Whangārei Art Museum on 29th February.

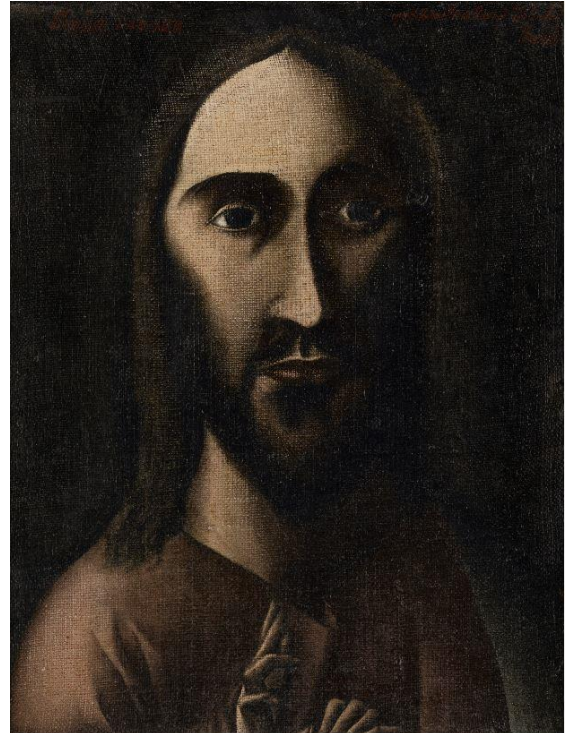
The exhibition focuses on the dark, intense paintings of New Zealand painter Tony Fomison (1939- 1990), which he produced during the early years of his career, from 1967 to 1975.

Te Papa Curator Modern Art Lizzie Bisley says that in the late 1960s, dark things began to emerge from Tony Fomison's paintings.

"His images of monsters, misfits, and medical deformities challenged polite society, and explored what it means to be an outsider," she says.

From a period of darkness in his own life, emerged these emotive and almost brutal paintings. The humanity of these grotesque works resonated profoundly with many – making him one of the most important New Zealand artists of his generation.

The exhibition includes well-known and less familiar works painted by Fomison, as well as never-before-seen video footage of the artist at work, and spaces for people to respond in conversation with the teens working on the show.



Tony Fomison: Lost in the Dark was first developed as a collaboration between Wellington High School students and Te Papa.



Developed and toured by the Museum of New Zealand Te Papa Tongarewa

Image Credit: Salvator mundi, 1970, Christchurch, by Tony Fomison. Purchased 1993 with New Zealand Lottery Grants Board funds. Te Papa (1993-0018-1)

For all Media enquires contact Mary de Ruyter
Mary.deruyter@wdc.govt.nz | 09 430 4240